

JUNCTION BOX

SURFACE/TREE MOUNT

Standard Installation



Flammable



Warning



High Voltage



Hot Surface

TOOLS NEEDED:



5/64" Allen Wrench
Waterproof Wire Connectors
Mounting Hardware
Drill bit and Drill

INSTRUCTIONS PERTAINING TO A RISK OF FIRE, OR INJURY TO PERSONS IMPORTANT SAFETY INSTRUCTIONS

Lighted fixture is HOT!

WARNING - To reduce the risk of FIRE OR INJURY TO PERSONS:

Turn off/unplug and allow to cool before replacing lamp/LED. Fixture gets HOT quickly! Contact only switch/plug when turning on. Do not touch hot lens, guard, or enclosure. Keep fixture away from materials that may burn. Do not operate the luminaire fitting with a missing or damaged shield. Do not touch the source at any time. Use a soft cloth or gloves. Oil from skin may cause damage.

SAVE THESE INSTRUCTIONS

IMPORTANT SAFETY INFORMATION - READ, FOLLOW, AND SAVE ALL SAFETY AND INSTALLATION INSTRUCTIONS

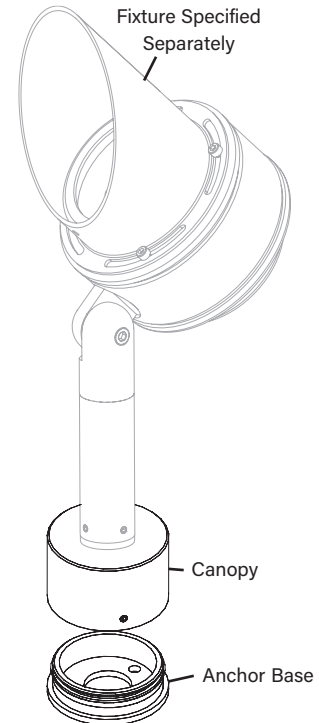
- Product must be installed by a qualified person in a manner consistent with its intended use and in compliance with the National Electrical Code, Canadian Electrical Code, and all Local and Provincial Codes.
- Follow product label information and instructions.
- Qualified Personnel with appropriate personal protective equipment must perform all servicing of this product.
- Before wiring to power supply and during servicing, turn off and lock out power at fuse or circuit breaker before service.
- The use of accessory equipment not recommended by the manufacturer or installed contrary to instructions may cause an unsafe condition. The use of damaged components may cause an unsafe condition and void product warranty.
- Do not block light emanating from product in whole or part, as this may cause an unsafe condition.
- Never operate the fixture with missing or damaged lens. Lens must be cleaned on regular basis.
- Entire fixture may become extremely hot. Do not touch hot lens or fixture body.
- Replace LED assembly only with correct wattage and type of power supply appropriate for LED assembly.
- All gaskets, o-rings and sealing surfaces must be kept clean during installation and service; failure to do this may cause an unsafe condition and void product warranty.

IMPORTANT LISTINGS AND CERTIFICATIONS

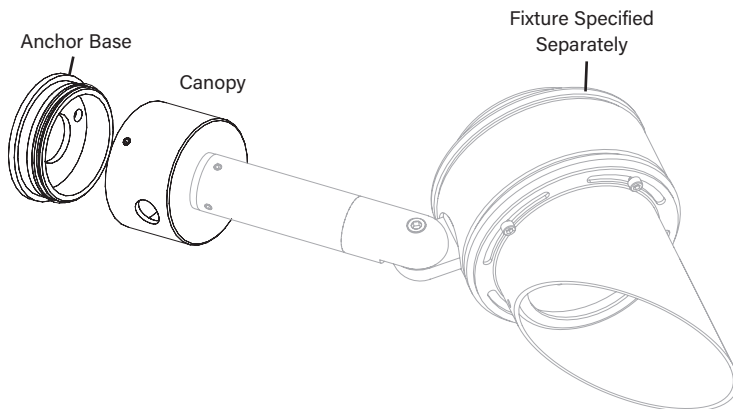
- Suitable for wet locations

Please refer to the low voltage design guide at www.tekaillumination.com/lvguide before installation for proper wire selection.

SMJ- Surface Mount Junction Box



TMJ - Tree Mount Junction Box



IMPORTANT SAFETY INFORMATION - READ, FOLLOW, AND SAVE THESE INSTALLATION INSTRUCTIONS

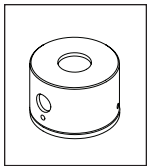
TEKA ILLUMINATION

40429 Brickyard Drive • Madera, CA 93636 • USA
559.438.5800 • FAX 559.438.5900
www.tekaillumination.com • info@tekaillumination.com

RELEASE DATE
04/03/2024

REFERENCE NUMBER
INS-2670-00

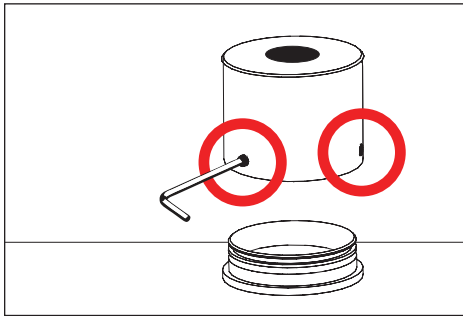
THIS DOCUMENT CONTAINS PROPRIETARY INFORMATION OF TEKA ILLUMINATION AND ITS RECEIPT OR POSSESSION DOES NOT CONVEY ANY RIGHTS TO REPRODUCE, DISCLOSE ITS CONTENTS, OR TO MANUFACTURE, USE OR SELL ANYTHING IT MAY DESCRIBE. REPRODUCTION, DISCLOSURE OR USE WITHOUT SPECIFIC WRITTEN AUTHORIZATION OF TEKA ILLUMINATION IS STRICTLY FORBIDDEN.



Standard Installation

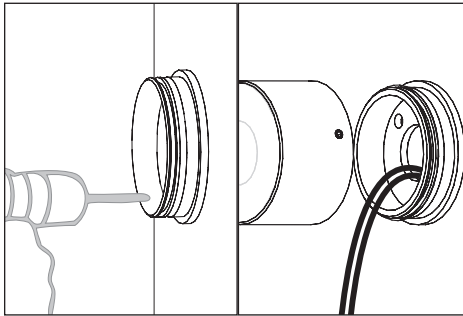
JUNCTION BOX

SURFACE/TREE MOUNT



1. Study anchor base plan. Prepare mounting surface for anchor base.
2. Use a 5/64" allen wrench loosen three (3) #8-32 stainless steel set screws (do not remove set screws from canopy). Remove anchor base from bottom of fixture.

⚠ **Seal base to surface as per NEC**

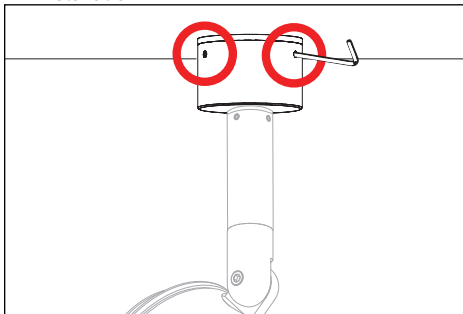


TMJ Anchor Mount

5. Secure anchor base to tree using appropriate hardware.

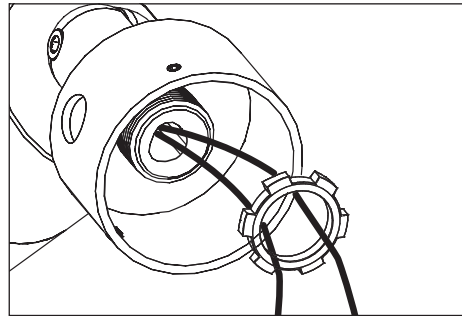
Run low voltage wiring from remote magnetic transformer to the fixture through the side entry of the canopy.

⚠ **Canopy must be mounted vertically and with wireway entry facing to the side or downwards. Do not install facing upwards in outdoor installation.**

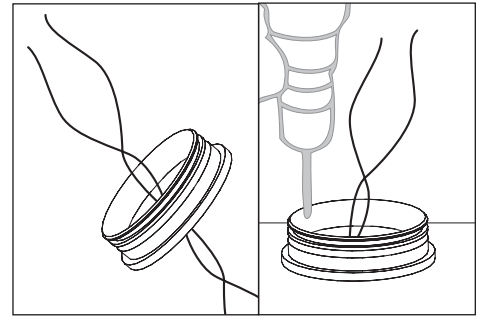


7. Place canopy onto anchor base and press firmly until the two pieces are fully seated.
8. Tighten the three (3) #8-32 stainless steel set screws on anchor base with a 5/64" allen wrench.

⚠ **NOTE: Do not over-tighten set screws.**



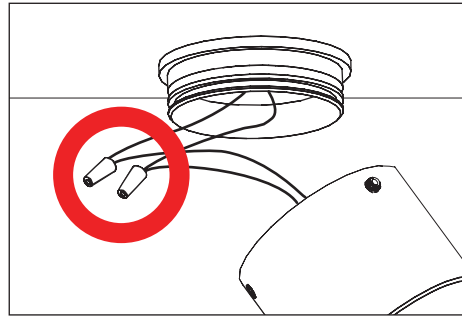
3. Mount knuckle onto canopy by securing 1/2" NPS stem with provided locknut.



SMJ Anchor Mount

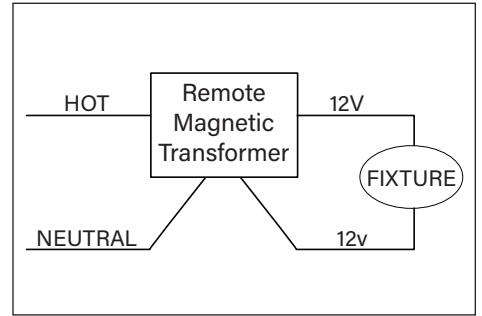
4. Pull low voltage wiring from remote magnetic transformer through the center of the anchor base.

Secure anchor base to solid surface (i.e. wood, concrete, stucco siding), using appropriate hardware for specific surface. **Seal as per NEC.**



6. Make watertight connections from remote magnetic transformer to fixture source leads using waterproof wire connectors (not included). See wiring diagram.

⚠ **NOTE: Contractor responsible for executing water tight splice.**



WIRING DIAGRAM

LED - For use with 12VAC LED remote transformer or magnetic transformers only. TEKA Illumination cannot guarantee performance with third party manufacturers' transformers.

**IMPORTANT SAFETY INFORMATION LISTED ON REVERSE
READ, FOLLOW, AND SAVE ALL SAFETY AND INSTALLATION INSTRUCTIONS**



TEKA ILLUMINATION

40429 Brickyard Drive • Madera, CA 93636 • USA
559.438.5800 • FAX 559.438.5900
www.tekaillumination.com • info@tekaillumination.com

RELEASE DATE
04/03/2024

REFERENCE NUMBER
INS-1265-00